



KINCLUNE

KINCLUNE HOUSE & ESTATE  
**WEDDINGS**



# KINCLUNE HOUSE & ESTATE

Make your wedding day truly magical at our brand-new idyllic heritage venue, Kinclune House and Victorian Courtyard Steading. Set amidst a stunning, private, 800-acre estate in the foothills to the Angus Glens, Kinclune offers an exclusive use sumptuous wedding venue in an extraordinary setting.

Step back in time, but with a modern flair. Kinclune House and Victorian Courtyard Steading offer an exceptional and stylish setting for your wedding celebration.

Kinclune House, a magnificent 19th century baronial mansion, has panoramic views over the Vale of Strathmore and is surrounded by woodland, making a picturesque backdrop for your fairytale Scottish wedding.

Guests will enjoy exclusive use of Kinclune Courtyard Steading, Kinclune House and two neighbouring cottages, with the option of an additional estate cottage, providing on-site accommodation for up to 28 guests, transforming your wedding into a cherished long weekend retreat.

As an award-winning nature-friendly estate, Kinclune provides a range of beautiful outdoor locations for your ceremony and photographs. Whether on Kinclune House lawn with panoramic views, in the courtyard, or in the serene woods, you'll find the perfect backdrop for your special moments.

For a truly unique experience, consider our Outlander-inspired wedding on top of Kinclune Hill, complete with a Highland pony.

Kinclune Estate is located in rural Angus and is only 40 minutes from the City of Dundee and 50 minutes from Perth.





# KINCLUNE COURTYARD STEADING

The magnificent Victorian Courtyard Steading is located immediately behind Kinclune House. The meticulously restored stone steading presents a modern, purpose-built space with heritage charm, including a spacious party barn and a sunlit ceremony or reception room for up to 120 guests.

Discover the perfect blend of rustic charm and luxury at Kinclune Courtyard Steading.

The venue will house all the facilities you would need to host your dream wedding, including accessible guest restrooms and a fully equipped catering kitchen.

- Grand party barn with soaring vaulted ceiling, perfect for up to 120 guests
- Light-filled ceremony space nestled under the captivating arches for up to 90 seated guests
- Charming enclosed courtyard adorned with fire pits and outdoor seating.





Wedding

# KINCLUNE HOUSE

Luxury awaits at Kinclune House. Boasting seven beautiful bedrooms and six elegant bathrooms, the house seamlessly blends contemporary comforts with timeless charm. Relax in the grand drawing room, dine in splendour in the spacious kitchen-dining room or retreat to the cosy snug. Indulge yourself in the exquisite surroundings.

Fully refurbished in 2023, towered and turreted Kinclune House offers sumptuous and elegant sleeping accommodation for up to 14 guests.

- Lavish honeymoon suite featuring a large, dedicated dressing room with luxurious double ended bath
- Spacious, beautifully designed kitchen-dining room which makes an ideal social space

- Heritage drawing room with large open fire
- Cosy snug, TV and games room with wood burning stove
- A further six unique and beautifully appointed double bedrooms
- Six luxurious bathrooms, two en-suite
- Large garden with charming pergola and outdoor dining.





# MAGICAL MOMENTS AT KINCLUNE...

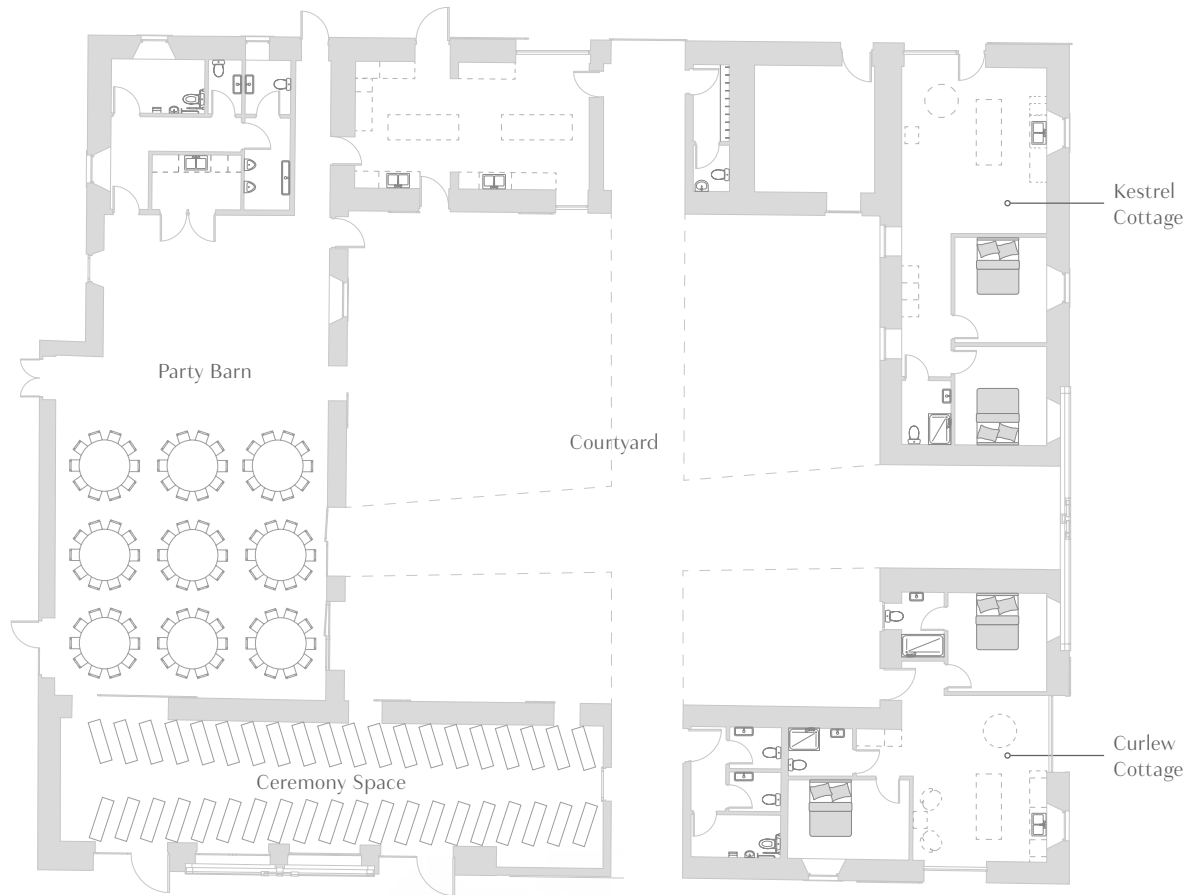






# FLOOR PLANS

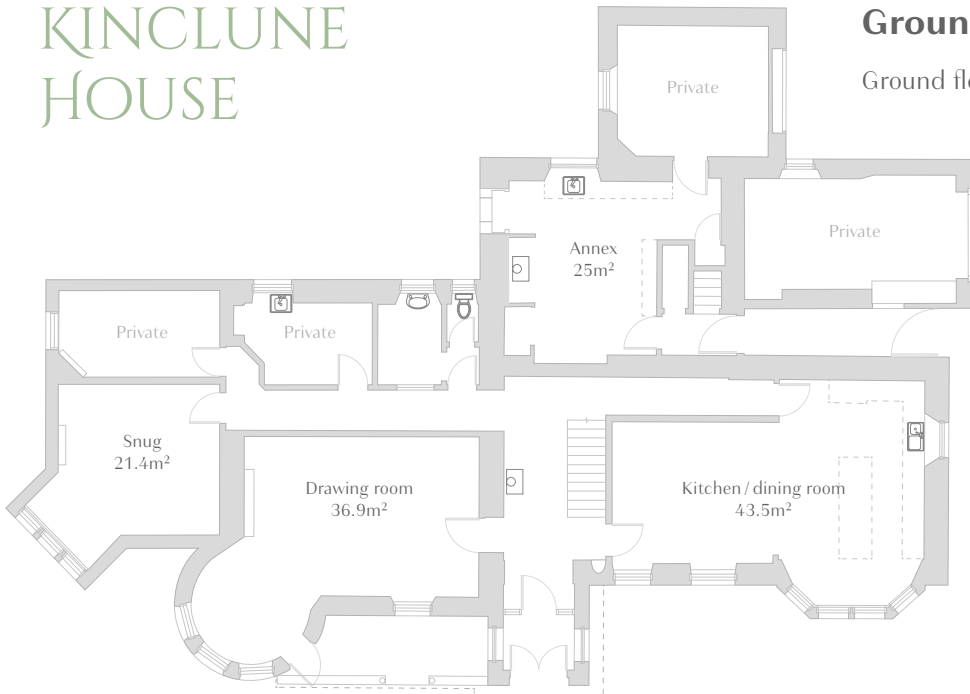
## COURTYARD STEADING



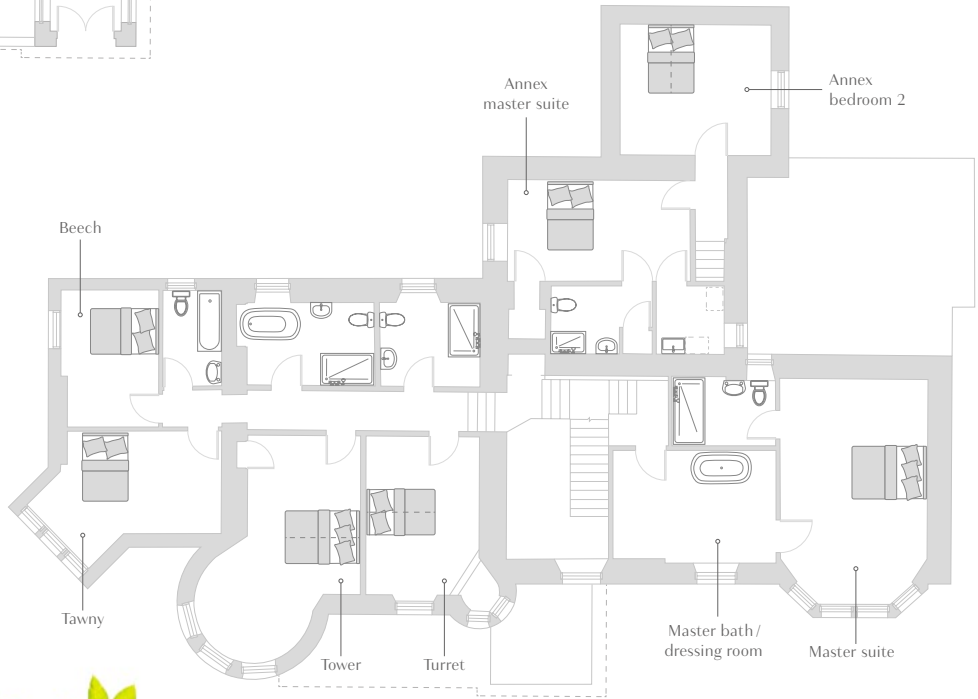
# KINCLUNE HOUSE

## Ground Floor

Ground floor guest area: 182m<sup>2</sup>



## First Floor





# KINCLUNE ACCOMMODATION

We offer destination, mid-week or weekend weddings with accommodation for up to 28 overnight guests, including exclusive use of Kinclune House and two steading cottages. Kinclune is the ideal setting for a stylish and memorable celebration.

The houses included in our wedding packages are within a few steps of each other and the courtyard steading, giving you and your guests freedom to move seamlessly around your own private estate. It will be your home-from-home for the duration of your stay, where you can relax and unwind with friends and family, extending your celebrations for as long as possible.

## INCLUDED

Accommodation for 22 guests is included as follows:

**Kinclune House** (sleeps 14)

Drawing room, kitchen-dining room, snug, 7 bedrooms, 6 bathrooms (2 ensuite).

**Curlew Cottage** (sleeps 4)

Kitchen-living room, 2 bedrooms, 1 ensuite shower room plus additional shower room.

**Kestrel Cottage** (sleeps 4)

Kitchen-living room, 2 bedrooms, 1 shower room.

## OPTIONAL

Grieve's Cottage is available to rent as an optional extra, with accommodation for a further 6 guests. Please contact us for pricing and to find out more.

**Grieve's Cottage** (sleeps 6)

A charming, traditional stone cottage with large garden. Kitchen-living room, 3 bedrooms (1 accessible), 1 ensuite shower room and 1 bathroom.

To accommodate the rest of your party, we can also recommend a hand-picked selection of the best nearby agritourism accommodation.



KINCLUNE  
COURTYARD  
STEADING

Curlew  
Cottage

Kestrel  
Cottage

Grieve's  
Cottage

KINCLUNE  
HOUSE

# KINCLUNE WEDDING PACKAGES

Host your wedding in the luxurious and elegant surroundings of Kinclune House and Victorian Courtyard Steading. Exclusively yours for your special occasion, Kinclune will charm and delight. Make your wedding day truly magical in this idyllic setting.

## **Weekend Weddings**

Exclusive-use of Kinclune House and Courtyard Steading for 3-night weekend wedding of up to 120 guests. Includes accommodation for 14 overnight guests in Kinclune House and a further 8 guests in the steading cottages\*.

## **Mid-week Weddings**

Exclusive-use of Kinclune House and Courtyard Steading for a 2-night mid-week wedding (Tuesday to Thursday) for up to 120 guests. Includes accommodation for 14 overnight guests in Kinclune House and a further 8 guests in the steading cottages\*.

## **Intimate Winter Weddings**

Exclusive use of Kinclune House and the smaller of the 2 steading venue spaces, grounds and wedding courtyard for a 3-night wedding for up to 50 guests. Includes accommodation for 14 overnight guests in Kinclune House and a further 8 guests in the steading cottages\*.

## **Micro Winter Weddings**

- Exclusive use of Kinclune House and Annex
- 3-night stay (overnight accommodation for 22 in Kinclune House and 2 cottages\*)
- Maximum of 22 guests
- Exclusive use of garden and a range of options for photographs, including woodland, meadow or other locations on the estate (weather permitting)
- Site management by Kinclune staff on the afternoon before and on the day of your event
- Wedding chairs for guests (setup in the drawing room or outside, weather permitting)
- Dining room - formal dining for up to 20 seated guests (including crockery, glassware, cutlery and table linen)
- For buffet style dining, guests will have access to 3 public rooms – dining room, drawing room and snug
- Access to Kinclune's list of suppliers, including florists, photographers, etc.

## **What's Included (Weekend, Mid-week and Intimate Winter Weddings)**

Our aim is to offer a complete, ready-to-use venue with no hidden extras, so we've included:

- Accommodation for 22 guests\*
- Dining tables, chairs and benches
- Sound and lighting
- Firepits
- Fully accessible steading venue
- Access to our list of suppliers

	Spring & Autumn (April, May & October)		Summer (June to September)		Winter (March, November & December**)	
	2025	2026	2025	2026	2025	2026
<b>Weekend Wedding</b>	£11,500	£12,500	£12,900	£13,900	Not available	Not available
<b>Mid-week Wedding</b>	£9,900	£10,900	£10,900	£11,900	Not available	Not available
<b>Intimate Winter Wedding</b>	Not available	Not available	Not available	Not available	£6,500	£7,500
<b>Micro Winter Wedding</b>	Not available	Not available	Not available	Not available	£4,800	£5,800

### Hire Period

Entry 12 noon, depart 12 noon

Day of event: guests arrive from 12 noon and must depart by midnight (excluding overnight guests).

### Note

\* Grieve's Cottage is available to rent as an optional extra, with accommodation for up to 6 guests

\*\*Winter weddings in December exclude Christmas and New Year.

The prices shown above are special introductory rates and may be subject to change.



# KINCLUNE WEDDING CATERING

Wow your wedding guests with an exceptional dining experience at Kinclune. From delicious menus to exquisite styling and florals, our exclusive in-house catering partner, Platter & Pop, will help bring your dreams to life.

Platter & Pop cater to all tastes and budgets, ensuring your special day is as unique as you are. From relaxed buffets and BBQs through to delightful canapés and fine dining, your guests can enjoy fresh, seasonal produce, beautifully styled and presented.

Their dedicated event designers can also provide a full floral and decor service, reflecting your theme in every aspect of your wedding day.

Working closely with you throughout, every detail will be flawlessly planned and executed, ensuring an unforgettable experience.

To find out more about how Platter & Pop can help you fulfil your vision, view the [Catering at Kinclune](#) brochure for details of some of the mouth-watering options available for your special day.

Whilst all catering at Kinclune is expertly provided by Platter & Pop, you are free to source your own floristry or decor services if preferred.

We can happily recommend some fabulous, trusted suppliers including photographers, florists, entertainment and musicians.







# KINCLUNE SUSTAINABILITY

Kinclune is an award-winning nature-friendly, organic estate – winner of the RSPB Nature of Scotland Awards 2021 for putting nature at the heart of our business. We ask our guests to adhere to our sustainability policy.

## **Restoration and Conservation of Historic Buildings**

We've lovingly conserved and renovated Kinclune House and restored and repurposed the stone Victorian courtyard steading instead of erecting less characterful, modern buildings in green spaces.

## **Stay!**

Kinclune offers a 'one-stop-shop' for your luxury weekend or mid-week wedding. Once your wedding party arrives at Kinclune, there's no need to travel. 28 of your closest family and friends can stay on Kinclune. For additional guests, see our list of recommended sustainable, local, agritourism businesses within a 5-mile radius.

## **Sustainable Transport**

We supply 3 EV chargers for guest use and encourage car-sharing or coach hire. Group transport to and from Dundee bus or train stations is easily arranged.

## **Supporting Local Suppliers and Local Produce**

We're delighted to support and recommend some fabulous local suppliers and their wonderful produce.

## **Sustainable Heat and Power**

Our steading is heated with biomass and our firepits and woodburning stoves all use wood from our own sustainably managed woodlands.

## **Reduce, Reuse, Recycle**

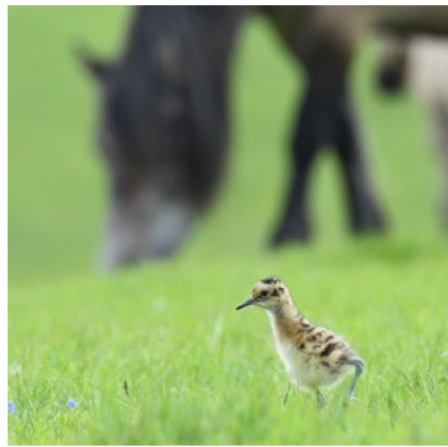
- Something borrowed - consider using hired or second-hand wedding decor
- Commit to a plastic-free wedding (no single-use plastics, artificial confetti, etc)
- Reduce water use, detergents and micro-plastics - consider using table runners instead of tablecloths.

## **Support Nature Conservation**

We manage a spectacular piece of Scotland's natural environment: 800 acres of diverse upland habitats with native woodland, hedges, wetland, wildflower-meadow and grassland. Organic for almost 20 years, and conservation-grazing with Scottish native ponies, cattle and sheep, means low carbon emissions offset by woodland, hedges and grassland, healthy soil, clean water and abundant biodiversity from the soil to the skies.

Kinclune is a wildlife haven: 3 bat species, including the rarer brown-long eared bat; 3 owl species; red squirrel; pine marten; osprey; red kite; raven; 25 Red and Amber List bird species, whose status is of special conservation concern, including skylark, yellowhammer, snipe, curlew, lapwing, oystercatcher, red shank, cuckoo, tawny owl, red and black grouse, sparrowhawk and kestrel.

By celebrating your special day with us, you can help us to continue our important conservation work.



Kinclune Estate  
Kirkton of Kingoldrum  
Kirriemuir  
Angus DD8 5HX

weddings@kinclune.co.uk  
[www.kinclune.co.uk](http://www.kinclune.co.uk)

Follow us:

📘 kinclune

📷 kinclunehouse

